

# DANIEL BREWER

51 High Street  
Great Dunmow  
Essex, CM6 1AE

Telephone • 01371 856585  
Website • [www.danielbrewer.co.uk](http://www.danielbrewer.co.uk)  
E-mail • [info@danielbrewer.co.uk](mailto:info@danielbrewer.co.uk)



**Daniel Brewer**

51 High Street  
Great Dunmow  
Essex, CM6 1AE

Telephone • 01371 856585  
Website • [www.danielbrewer.co.uk](http://www.danielbrewer.co.uk)  
E-mail • [info@danielbrewer.co.uk](mailto:info@danielbrewer.co.uk)

#### Disclaimer

These particulars, whilst believed to be accurate are set out as a general outline only for guidance and do not constitute any part of an offer or contract. Intending purchasers should not rely on them as statements or representation of fact, but must satisfy themselves by inspection or otherwise as to their accuracy. We have not carried out a detailed survey nor tested the services, appliances and specific fittings. Room sizes should not be relied upon for carpets

and furnishings. The measurements given are approximate. No person in this firm's employment has the authority to make or give any representation or warranty in respect of the property.

**BRAN END FIELDS, STEBBING, DUNMOW, ESSEX, CM6 3RN**

**OFFERS OVER £325,000**



**BRAN END FIELDS  
STEBBING  
DUNMOW  
ESSEX  
CM6 3RN**

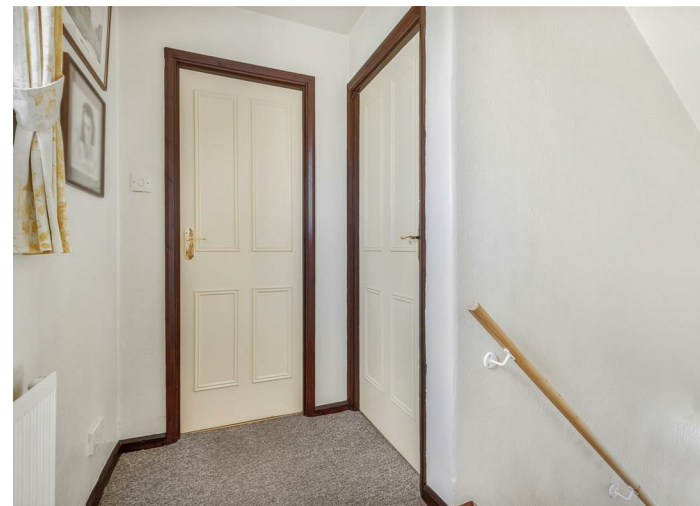
*Located in a quiet close within the highly sought-after village of Stebbing, this well-presented two-bedroom end-terrace home offers comfortable living in a peaceful setting.*

*The property features two generous double bedrooms, both with built-in wardrobes. The principal bedroom and living room benefit from air conditioning, ensuring year-round comfort. A modern family bathroom serves both bedrooms.*

*On the ground floor, a welcoming living room provides an ideal space for relaxing or entertaining, while the well-proportioned kitchen/dining room offers plenty of room for everyday living. An entrance hall completes the layout.*

*Outside, the property boasts a larger-than-average rear garden for a home of this type. To the front, off-road parking for two vehicles adds further convenience.*





### Driveway Parking

Driveway parking for two vehicles

### Village Summary

Bran End is a small and peaceful hamlet situated within the parish of Stebbing, surrounded by attractive open countryside and undulating farmland. Located just next to the well-served village of Stebbing, it benefits from access to a range of local amenities including a highly regarded primary school, village shop, The White Hart Public House, St Marys Church and Andrewsfield airfield.

- End Of Terrace Home
- Two Double Bedrooms With Built-In Wardrobes
- Approximately 770 Square Feet Of Accommodation
- Air Conditioning
- Family Bathroom
- Kitchen/Dining Room & Living Room
- Driveway Parking For Multiple Vehicles
- Generous Rear Garden Backing Onto Open Farmland
- Walking Distance To Local Amenities
- Viewing Advised

### Entrance Hall

Entrance via UPVC front door with double glazed frosted windows, stairs to first floor landing, carpeted flooring, ceiling mounted light fixture, various power points. Doors to: Kitchen, Living Room.

### Kitchen/Dining Room

16'0" x 8'2" (4.9m x 2.5m)

UPVC door to side aspect, Double glazed UPV window to front, side & rear aspects, various base and eye level units, one and a half unit sink with mixer tap, low level fan oven, four ring gas hob with extractor fan, space for dining table, access to understairs storage, wall mounted radiators, tiled flooring, ceiling mounted light fixture, various power points.

### Living Room

11'1" x 16'0" (3.4m x 4.9m)

Double glazed UPVC French doors to rear aspect, double glazed UPVC window to front aspect, log burn with sandstone hearth, featured sandstone low level wall, Daykin air conditioning unit, wall mounted radiator, carpeted flooring, various power points.

### First Floor Landing

Double glazed UPVC window to rear aspect, access to loft, carpeted flooring, ceiling mounted light fixture. Doors to: Bedrooms & Bathroom.





**Principal Bedroom**

16'0" x 10'9" (4.9m x 3.3m)

Double glazed UPVC window to front & rear aspect, two sets of inbuilt sliding door wardrobes, air conditioning unit, wall mounted radiators, carpeted flooring, ceiling mounted spotlight array, various power points.

**Bedroom Two**

11'9" x 8'10" (3.6m x 2.7m)

Double glazed UPVC window to front aspect, inbuilt wardrobes, access to over stairs airing cupboard, wall mounted radiator, carpeted flooring, ceiling mounted light fixture, various power points.

**Family Bathroom**

Frosted double glazed UPVC window to side aspect, three-piece suite, low level WC, vanity wash hand basin with mixer tap, tiled corner shower with sliding glass door, wall mounted heated towel rail, electric fan heater, tiled walls, tiled flooring, inset spotlights.

**Gardens**

To the front of the property, a gravel driveway provides off-road parking, complemented by a concrete pathway leading to the entrance. The frontage is attractively bordered by low-level hedging and a selection of established shrubs and planting, while a timber gate offers convenient pedestrian access to the rear garden.

The rear garden features a stone-paved patio with surrounding flowerbeds. A useful storage outbuilding is positioned to one side, while a stone paved pathway leads through timber trellis to an additional paved area with further planting and a wooden shed. Beyond, there is a dedicated planting area with greenhouse, opening onto a lawned section bordered by mature trees and shrubs. The garden is enclosed by low level timber fencing and hedging.

